



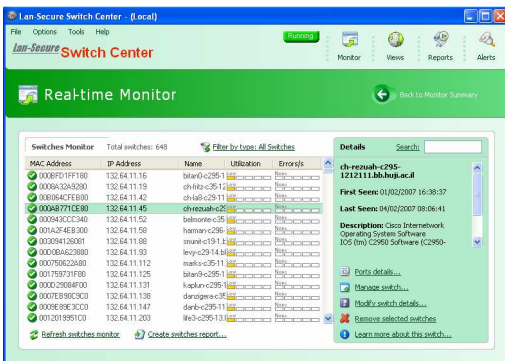
If your network is your most important asset You need Switch Center to help you keep it that way

Switch Center is a complete management suite for network switches that helps to discover, monitor and analyze your network connectivity and performance. Switch Center can discover any manageable switch or hub that supports SNMP BRIDGE-MIB and provides real-time solution for network maintenance.

Switch Center offers an easy approach of management for your network switches and nodes and makes your network maintenance simple and easy.

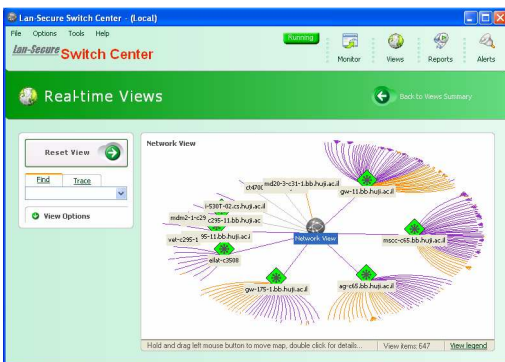
Real-time network monitoring

Switch Center monitors your network constantly without the need of any remote agents or special network considerations. It analyzes your network switches and nodes activity and keeps you aware of any change in your current network configuration and status.



Real-time network connectivity

Switch Center maps your network switches and nodes to their current physical location and keeps you updated about your network connectivity in real-time. Using the network hierarchy map you can find and trace your network entities and track their traffic and activity for maintaining the best network availability.



Real-time network performance

Switch Center analyzes your traffic utilization and errors and keeps you updated about any potential network malfunction before it can cause severe damage to your network.



Switch Center Key Features

- Real-time network discovery and monitoring including detailed nodes and users information.
- Real-time network connectivity and performance supporting graphical views.
- Real-time reports and statistics including exporting capabilities.
- SQL and HTML database exporting capabilities.
- Multiple levels of users and access permissions.
- Central viewer with multiple servers support for restricted and isolated networks.
- Real-time state and threshold alerts.
 - Email alerts forwarding.
 - SNMP traps alerts forwarding.
 - Daily and weekly alerts reports.

Switch Center system requirements

- A 800 MHz or faster processor with at least 256 MB of RAM
- Microsoft Windows 2000, Windows XP, 2003 Server™ or Windows Vista™
- At least 10 MB of available free space on your hard disk